

# PRE-MEDICAL & PRE-DENTAL ADVISING OFFICE WEEKLY NEWSLETTER

Thursday, October 7th 2021

# UConn

PRE-MEDICAL AND  
PRE-DENTAL ADVISING  
OFFICE



## WELCOME BACK!

We're excited to report that our office will offer both virtual and in-person advising appointments during Fall 2021. Krista, Erin, and Keat will have rotating hours in-office (4th floor of Rowe) on Monday, Tuesday, and Thursday, and all advisors will have online availability.

### To schedule an appointment:

- Attend a Fall 2021 group advising session or view one in a previous semester. Register for our live October session [here](#)
- After attending a group advising session, schedule an appointment for Pre-Dental (Dr. Abbott) via Nexus or for Pre-Medical (all advisors) by completing the Appointment Request Form on our website. More information can be found by visiting the "Make an Appointment" section of our website.

# WE'RE OPEN

## In-person Office Hours

WE'VE MISSED YOU! STOP BY, INTRODUCE YOURSELF TO KRISTA, ERIN, AND KEAT, AND GRAB A STRESS BALL.

**ROWE  
4th Floor**



**JOIN US EVERY THURSDAY IN THE  
MONTH OF OCTOBER FROM 1P.M. TO  
3P.M. FOR WALK-IN ADVISING  
HOURS**

<https://uconn-cmr.webex.com/meet/pcp13001>

*UConn Pre-Medical/Pre-Dental  
Advising Office*

### **VIRTUAL DROP-IN HOURS**

Monday-Thursday @ 4pm-5pm

Come by and get your answers to all  
Medical and Dental School questions  
answered by your trusted advisor Paris  
Pruitt



# *UConn Pre-Medical/Pre-Dental Advising Office*

## **VIRTUAL DROP-IN HOURS FOR FIRST GENERATION AND MINORITY STUDENTS**

Monday-Thursday @ 5pm-6pm

Come by and get your answers to all  
Medical and Dental School questions  
answered by your trusted advisor Paris  
Pruitt





## HUSKY HEALTH FOUNDATION WORKSHOPS

VIRTUAL FALL SERIES 2021

Co-Curricular  
Engagement

Tues, Sept 28 2-3pm

Understanding  
Your Values

Tues, Oct 19 2-3pm

Exploring  
Health Professions

Tues, Nov 9 2-3pm



## HUSKY HEALTH FOUNDATION WORKSHOPS

VIRTUAL FALL SERIES 2021

Tues, Oct 19 2-3pm

**Understanding  
Your Values**

When your values and profession align, you are more likely to find peace, fulfillment, and happiness in your work life. How do we lean into our values to make big decisions about our future? Join us to find out!

**JOIN HERE**

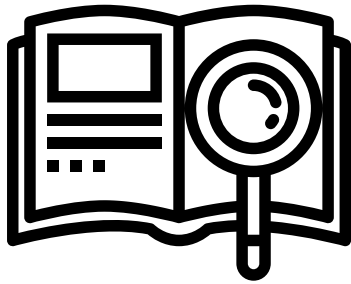
<https://uconnvtc.webex.com/meet/preadvis>

**UCONN**  
PRE-MEDICAL AND  
PRE-DENTAL ADVISING  
OFFICE

**UCONN**  
STUDENT ACTIVITIES  
LEADERSHIP & ORGANIZATIONAL  
DEVELOPMENT



# Psychology Undergraduates and Post-baccs!



**Are you looking for  
research or job  
opportunities in the field  
of psychology?**

Click this [link](#) for a list of available positions compiled by Yale Psychology Committee of Diversity and Inclusion

**CHAT WITH  
ALUMNI  
RECORDING  
IS POSTED**

## First Generation

(session held 10/8/2021)

[Chat with Alumni biographies .pdf](#)



Couldn't make the live event? Head over to our website to watch a recording of the first Chat with Alumni event of the semester! You can also watch previous events hosted by our office



# Listen to the Experts: Medical Program Admissions Panel

Admissions representatives from select medical and health related programs will share their insight into what the schools and admissions teams are looking for in an application.

Open Q&A will be offered during and after the session.

Representative schools:

- UConn Medical School
- Boston College
- Connell School of Nursing
- Harvard T.H. Chan School of Public Health
- MGH Institute of Health Professions
- Northeastern University
- Bouve College of Health Sciences
- Regis College
- Simmons University

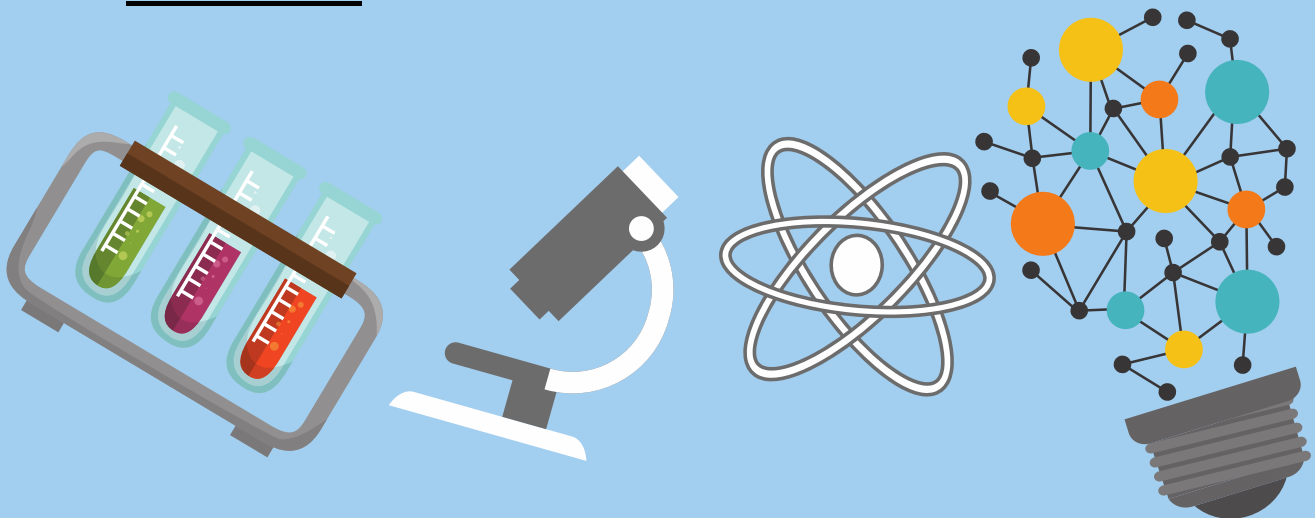
<https://uconn.joinhandshake.com/events/866906?ref=events-search>

<https://us06web.zoom.us/j/89694904425>

# MCAT 2022 NEWS

## Tips if you plan on taking the MCAT in 2022

- Complete the first 5 tabs in the MCAT Registration System between September 24 - October 12
- Registration Opens at Noon ET on either Oct 13 or 14 depending on your desired test location. East coast locations are Oct 13. The waiting room line will open 10 minutes prior to Noon. [Find out more here.](#)
- Fee Assistance is available for those that qualify, but must be approved **PRIOR** to registering for a test date or applying for medical school. [Learn more here.](#)



Please note that the Pre-Medical and Pre-Dental Advising Office will no longer be accepting Applicant Portfolio submissions after Friday, October 15, 2021. All applicants seeking a cover letter and coaching session must submit their completed applicant portfolio by 11:59 p.m. (EST) on **Friday, October 15, 2021.**

# PNB 3278 “Patient and Healer”

taught by our very own Dr. Keat Sanford!

**REGISTRATION OPENS ON OCTOBER 18 FOR THE SPRING 2022 SEMESTER COURSE**

The Patient and Healer course ([PNB 3278](#)) is described as being an “introductory grounding and experience for students interested in the healing professions in how patients and families experience illness, and what it’s like to be a professional health provider.”

This is a two-credit course taught by Dr. Keat Sanford, one of the pre-medical advisors in our office. The course is offered each semester; **any student interested in enrolling in the class needs to receive a permission number from our office.**

To receive a permission number from our office, interested students need to fill out the permission number request form that is posted to [this page](#) starting **October 18th.**





**UCONN**  
UNIVERSITY OF CONNECTICUT  
FIRST YEAR PROGRAMS  
LEARNING COMMUNITIES  
ACADEMIC ACHIEVEMENT CENTER

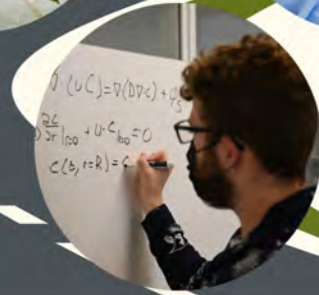
**UCONN**  
ENRICHMENT PROGRAMS  
OFFICE OF  
UNDERGRADUATE RESEARCH



RESEARCH CONNECTIONS:  
**AVENUES TO  
RESEARCH**

Friday, October 15  
2:00-4:00pm  
Peter J. Werth  
Residence Tower  
#DiscoverR1

## MEET UNDERGRADUATE RESEARCHERS



Research Connections, part of UConn's annual Month of Discovery, is intended to expose primarily first and second year students to UConn's rich landscape of research through meaningful interactions with faculty, staff, graduate students, peers, and other key partners. Research Connections can involve offices, departments, and initiatives from across campus, spanning any discipline or area of study.

When: Friday, October 14 from 2-4 pm at Werth

REGISTER [here](#)

# UNDERGRADUATE RESEARCH POSTER EXHIBITION



**WEDNESDAY, OCTOBER 20, 2021**

5:00 to 7:00 p.m.

**Wilbur Cross North Reading Room**



# **VOLUNTEERS NEEDED:** **OFFICE OF UNDERGRAD RESEARCH**

The Office of Undergraduate Research is in need of student volunteers to assist with the upcoming *Fall Frontiers Undergraduate Research Poster Exhibition* on October 20th. If you are free during any of the hourly time slots listed below, and are interested in helping out (moving furniture, papering poster boards), please contact me via email at [Jodi.eskin@uconn.edu](mailto:Jodi.eskin@uconn.edu) as soon as possible. Volunteers will report directly to the Wilbur Cross North Reading Room at their assigned time.

## **Wednesday, October 20th**

8:00am – 9:00am

9:00am – 10:00am

10:00am – 11:00am

11:00 am – 12:00pm



**EMAIL: [jodi.eskin@uconn.edu](mailto:jodi.eskin@uconn.edu)**

# Join the Alzheimer's Association!

The UConn Alzheimer's Association is dedicated to spreading awareness about Alzheimer's Disease. We advocate for Alzheimer's Disease research through fundraisers and events mainly supporting the CT Alzheimer's Association. Our club provides opportunities to volunteer at the Mansfield Center for Nursing and Rehabilitation. We also have guest speakers from various healthcare and professional organizations that share their research, case studies, or social work related to dementia disorders

alzheimer's association  
Connecticut Chapter

**THE UCONN  
ALZHEIMER'S  
ASSOCIATION PRESENTS:**

**Dr. Zdanys**  
Associate Professor of Psychiatry

Tuesday 10/19 at 6:30 p.m

- Learn about clinical assessments physicians use to diagnose dementia
- Understand different types of dementia, including Alzheimer's

# NATIONAL ALZHEIMER'S BUDDIES

## WHAT IS NAB?

NAB is a nonprofit organization that partners with local memory care centers/homes, pairs college students with Alzheimer's residents, and works to alleviate social isolation and bring awareness to Alzheimer's disease by building friendships.

## WHAT IS OUR MISSION?

NAB strives to empower students and individuals with Alzheimer's disease to break through the boundaries imposed by the disease and discover a new identity together.

## IS RECRUITING...

- Chapter Directors
- Student Volunteers

## WHAT ARE THE ROLES OF A CHAPTER DIRECTOR?

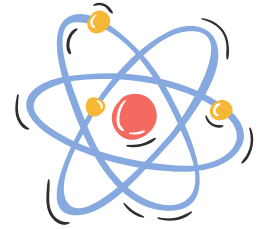
- Fostering partnership between the university and memory care facility
- Recruiting volunteers passionate about working with those with Alzheimer's disease
- Supporting volunteers through facilitating meetings to share experiences with buddies



NATIONAL ALZHEIMER'S BUDDIES



# CT MIDDLE SCHOOL SCIENCE BOWL LEADERSHIP OPPORTUNITY



The UConn Middle School Science Bowl (MSSB) Student Leadership Team is seeking students who are passionate about STEM and community outreach to help organize the 2022 MSSB event!

The competition will take place on  
**Saturday,  
February 26,  
2022**



The Southern New England Middle School Science Bowl is a quiz bowl competition in which teams of four answer challenging science, math, earth & space science, chemistry, energy, and physics questions in a fast-paced, timed setting. The students represent some of the strongest middle school STEM students in Connecticut and Rhode Island. The top team will advance to the National Science Bowl in Washington D.C.

# Diagnose CTE Research Project Position



**DIAGNOSE CTE**  
Research Project

## Clinical Research Assistant

### Full-Time Position Available

### DIAGNOSE CTE Research Project

*Boston University CTE Center, Boston University School of Medicine*

We are seeking a talented individual to serve as Clinical Research Assistant for the Boston University (BU) Chronic Traumatic Encephalopathy (CTE) Center at the National Coordinating Center for the [DIAGNOSE CTE Research Project](#). The DIAGNOSE CTE Research Project is an NIH-funded, 7-year, multi-center, multidisciplinary, longitudinal clinical research study of CTE. The primary goals of the project are to: develop methods of diagnosing the neurodegenerative disease, CTE, during life, refine and validate diagnostic criteria for the clinical diagnosis of CTE, and investigate genetic and head impact exposure risk factors for CTE. The National Coordinating Center is located within the BU CTE Center at BU School of Medicine. All baseline evaluations (on former NFL players, former collegiate football players, and men with no contact sport or military history) are complete, with follow-up evaluations being conducted remotely.

### Responsibilities

- Coordinate and conduct remote study evaluations, including consenting and determining decisional capacity
- Administration and scoring of telephone- and video-based neuropsychological tests and other assessments
- Schedule in-home phlebotomy appointments and shipping of blood samples
- Screen study participants ahead of remote evaluations
- Support study team by aiding with participant evaluations, data collection, and data management

### Qualifications

- Bachelors' degree (or equivalent) in Psychology/Neuropsychology, Neuroscience, Public Health, Sports Medicine, Pre-Med track, or related field
- Exceptional organizational, interpersonal, and oral and written communication skills
- Proven excellence as a team player
- Previous experience in a clinical research setting is preferred

### 2-year Minimum Commitment

This is an excellent opportunity for an individual planning to apply to medical school or graduate school in neuropsychology, public health, or neuroscience. Team member will have exposure to a wide range of study procedures and there is potential for authorship on publications.

### To Apply

Email a cover letter and resume to:

The DIAGNOSE CTE Research Project Administrative Coordinator, Kaleb Batten, [kobatten@bu.edu](mailto:kobatten@bu.edu)

[www.sternneurolab.org](http://www.sternneurolab.org) • <http://diagnosecte.com>

# Dental School Health Professions Scholarship Program

provided by the Army Medical Department

---

Dental school is a very expensive proposition. In this short prerecorded webcast you will learn about a Dental School Scholarship option that will pay 100% tuition, books and fees. This scholarship is with the Army Medical Department and is specifically for Dental School. Additionally, this scholarship will provide a stipend of over \$2,500.00 a month while in Dental School. Thank you for taking the time to watch this brief webcast on the Army Medical Department's Dental School Scholarship program.

## **Watch the webcast [here](#)**

- 100% tuition paid
- All required books and equipment needed are covered
- \$2,540 monthly stipend during Dental School
- \$20,000 bonus, first year of Dental School





**AmeriCorps**  
Connecticut

**HEALTH**Forward

## CURRENTLY ACCEPTING APPLICATIONS FOR A 10 MONTH POSITION IN HEALTH

AmeriCorps is currently accepting applications for the CT Area Health Education Center (AHEC) Network HEALTHForward AmeriCorps program.

The HEALTHForward AmeriCorps Program aims to increase health and health career knowledge in disadvantaged communities through implementation of the Youth Health Service Corps (YHSC) and Collegiate Health Service Corps (CHSC) service learning programs. The YHSC and CHSC programs are health career recruitment programs that engage diverse students as leaders in meaningful service learning that address community health issues.

HEALTHForward AmeriCorps members **recruit, train** and **manage** students in the YHSC and CHSC programs, exposing students to entry level health care careers and teaching them how to successfully enter onto upwardly mobile health care career ladders. Members aim to **improve underserved communities' health knowledge** through implementation of Community-Based Experiential Training Programs with health professions students.

This is a *full-time, 10-month commitment* beginning as late as October 2021 (apply now!).

Bachelor's degree is preferred.

Service sites are at CT AHEC offices in Norwich, Shelton and Waterbury.

BENEFITS: Training, living allowance, education award upon successful completion of service.

Interested applications should email their resumes to Jackie Nickolas at [nickolas@health360.org](mailto:nickolas@health360.org)



# JOIN US FOR A FREE VIRTUAL SEMINAR TO EXPLORE THE MD/PHD CAREER PATH

**SATURDAY, OCTOBER 23, 2021 ~ 10:30AM - 3:00PM CENTRAL TIME**



## REGISTER TODAY!

**REGISTER BY OCTOBER 20 TO SECURE YOUR SPOT.**

Use the QR Code or click **HERE** to register and to view the full, detailed schedule.

**★ THE SEMINAR IS OPEN TO ALL BUT TAILORED TO 1ST/2ND-YEAR COLLEGE STUDENTS WHO ARE UNDERREPRESENTED IN MEDICINE (WOMEN, LGBTQ, RACIAL/ETHNIC MINORITIES) ★**

- Are you considering going to medical school?
- Do you like your science classes?
- Are you interested in scientific research?
- Are you still exploring pre-health career options?
- Do you want to network with peers nationally?

If you answered 'yes' to 1 or more of these questions, this session is right for you!

CLICK ON THE PHOTOS TO LEARN MORE ABOUT THE SLATE OF DYNAMIC SPEAKERS!



**Iboro Umana**  
MD, PhD  
The University of Pennsylvania



**Dennis Spencer**  
MD, PhD  
Boston Children's Hospital



**Russell Reid**  
MD, PhD  
The University of Chicago



**Sylvia Edoigiawerie**  
Current Student  
The University of Chicago,  
AABPS Dir. of Outreach



**Chavon Onumah**  
MD, MPH  
The George Washington University



**Donald Rodriguez**  
Current Student  
The University of Chicago



**Sunny Nakae**  
MSW, PhD  
California University of Health Sciences



### Explore your options

Now is the time to explore your options and find what fits.



### Medicine+Science

Combine clinical patient care with your love of science.



### 100% full funding

Most MD/PhD programs offer full funding.

**QUESTIONS? [MSTP@BSD.UCHICAGO.EDU](mailto:MSTP@BSD.UCHICAGO.EDU)**

**@\_BNGAP @UCHICAGOMSTP**



For more information:  
<https://www.casahope.org/hands-of-hope-service-year-1>  
 APPLY [HERE](#)

## SERVICE YEAR OPPORTUNITY FOR GRADUATING SENIORS

Are you or someone you know looking for a service-year opportunity working directly with young children?  
 Apply today!

### ABOUT THE PROGRAM

The Hands of Hope Service Year Program at Casa de Esperanza provides recent college graduates first-hand experience caring for emotionally and medically fragile children. Hands of Hope house parents commit a year to live and work with the children living in the agency foster homes and undergo over 80 hours of training before caring for children.

### WHAT WILL I BE DOING?

Everything necessary to properly and safely care for, advocate for and meet the daily needs of four to five children placed in your home.

### WILL I BE DOING THIS ALONE?

No! The community is made up of ten homes in a gated neighborhood with approximately four (4) Hands of Hope House Parents in each home.

### WHAT ARE THE REQUIREMENTS?

In order to be considered, you must have the ability to make a one-year commitment (shorter commitments considered), be 21 years of age, be willing to work closely with children with behavioral and developmental issues, and pass a background check & drug test. Valid U.S. Driver's license is also preferred.

### DO I HAVE TO HAVE A SPECIFIC MAJOR?

No! All majors are welcome. Common majors include social work, pre-medicine, psychology, education, sociology, health sciences, and social justice.

### HOW WILL THIS HELP MY FUTURE?

A Hands of Hope gap year gives you the opportunity to earn hands-on experience learning how abuse, neglect, and the effects of HIV play in the lives of some of our most vulnerable children. You will be working directly with therapists, specialists, and social workers to meet the specific needs for each child, exposing you to several career options for the future.

### QUESTIONS?

CONTACT DAREAN TALMADGE  
 DTALMADGE@CASAHOPE.ORG | 713-529-9179  
 P.O. BOX 66581 | HOUSTON, TX 77266

# OPPORTUNITY FOR LGBTQ+ PRE-MEDICAL STUDENTS



# MSPA

LGBTQ+ COMMUNITY ★ ADVOCACY ★ INNOVATION

## National Pre-medical Membership

### What comes from joining?

- Bi-weekly virtual shadowing opportunities.
- Access to our LGBTQ+ pre-medical student discord server
- The group is a great way to connect with other LGBTQ+ pre-medical and medical students

### What is MSPA?

- A group of medical students and pre-medical students who:
  - advocate for the rights of LGBTQ individuals in healthcare
  - promote recruitment of queer students into medicine
- <https://www.medpride.org/national-premedical-membership-application>

Learn more on our website or message us with questions!

Medical Student Pride Alliance has recently launched membership applications for pre-medical students. We offer bi-weekly shadowing sessions, access to many LGBTQ+ medical students, access to a messaging platform specifically meant for LGBTQ+ pre-medical students, group and 1-on-1 mentorship. We are actively working on guides for the application process and FAQ sheets for transgender and gender diverse applicants. We will continue building our programs to fit the unique needs of LGBTQ+ pre-medical students as they join!

**Click [here](#) to sign up**

MASSACHUSETTS  
GENERAL HOSPITAL

# RESEARCH OPPORTUNITY

*Gomez-Isla Lab at Mass General Hospital (Charlestown, MA)*

## Research Assistant

---

"The Gomez-Isla lab at Massachusetts General Hospital focuses on the development and characterization of transgenic mouse models of Alzheimer's disease and on testing novel therapeutic strategies. Research is also conducted with human brain tissue from individuals who suffered Alzheimer's disease while alive. Dr. Gomez-Isla's clinical research focuses on cognitively intact individuals across the age spectrum to search for molecular mechanisms responsible for individual vulnerability or resilience to this type of dementia"

The Assistant will have the responsibilities of maintaining cell lines, running Hek seeding assays as needed, conducting data analysis and producing figures, running western blots, scanning slides on the nanozoomer, potential slide preparation and IHC work, ordering a few specific things like freezer boxes, maintaining the Flow Cytometer supplies, and making TBS stock solutions for the lab when necessary. The Assistant does not need to have prior experience, but will need to have a willingness to learn new techniques.

If interested please email an updated resume and cover letter to **[ddenbow@mgh.harvard.edu](mailto:ddenbow@mgh.harvard.edu)**.

*<https://www.massgeneral.org/neurology/research/gomez-isla-lab>*



## GET 1 HOUR OF SHADOWING

A shadowing opportunity whereby pre-health students may participate in medical cases.

FIND OUT MORE :  
[www.motivatemd.com](http://www.motivatemd.com)

# VIRTUAL PREMED SHADOWING

Wednesdays  
 @ 8 pm CST on Zoom

## MEET OUR TEAM



Michaela B., M.D./MBA

Emergency Medicine Physician

Medical School: University of Virginia School of Medicine



Ravin P., D.O.

Family Medicine Physician

Medical School: NSU-CCOM



Emma F.

MS3 at the Burrow College of Osteopathic Medicine



Emma I.

MS4 at Kansas City University



Karan K.

MS3 at Touro College of Osteopathic Medical School



Erin O.

MS3 at the University of Miami



@thepremedapp



Motivate MD  
 Virtual Rounds



support  
 @motivatemd.com



Text or Call  
 917-994-0765

# SIGN UP HERE



## SAVE THE DATE #HPW2021: NOV 4-11

Health Professions Week (HPW2021) is a fun, weeklong event designed to lead you along a path to a healthcare profession. 20+ health professions are represented at different types of events during HPW – so you can choose what content matters to you. HPW has both live webinars with current professionals and students AND on-demand content you can watch on YouTube. Make a plan to attend the Virtual Career Fair on November 10 from 3-9pm eastern so you can talk directly with the staff and professionals of the health professions you are researching.

**Register to Get Access to All of HPW for Free!**

# BROWN SCHOOL OF PUBLIC HEALTH

OCTOBER 2021

**Read the October 2021 updates and news from Brown School of Public health!**

**<https://www.brown.edu/academics/public-health/news>**



---

# Spotlight on Services: Surgical First Assistant

---



"A surgical first assistant, also referred to as a surgical assistant or simply a first assist, works closely with surgeons in the operating room during a surgical procedure. They anticipate the needs of the surgical team and during an operation, assist the surgeon with tasks such as selecting equipment, holding open incisions, stopping bleeding, closing the incision, among other technical tasks."

<https://college.mayo.edu/academics/explore-health-care-careers/careers-a-z/surgical-first-assistant/>



# BIOMEDICAL SCIENCE CAREERS PROGRAM

Please find the October edition of “What’s Happening @ BSCP” a monthly roundup of upcoming offerings, resources and information for the BSCP community, as well as anything you may have missed!

[https://www.bscp.org/wp-content/uploads/2021/10/Whats-Happening-at-BSCP-October\\_21\\_v2.pub\\_.pdf](https://www.bscp.org/wp-content/uploads/2021/10/Whats-Happening-at-BSCP-October_21_v2.pub_.pdf)



# That's it for now!

*Stay tuned for our next newsletter...*

**Until then, stay in the loop with us by following us on social media!**

**Check out our Link Tree for more:  
[linktr.ee/uconnpremed](https://linktr.ee/uconnpremed)**

***Follow us on Instagram!  
@UConn\_Premed\_Predental***

